

**PERFORMANCE YOU CAN COUNT ON**

EQUIPMENT • PARTS • SERVICE • RENTALS

[WWW.HILLSMACHINERY.COM](http://WWW.HILLSMACHINERY.COM)

888.830.5939



## INDEX

### EQUIPMENT

CASE .....	3
Impact Crushers.....	7
Heavy-duty Screens .....	7
Inclined Screens.....	8
Jaw Crushers.....	8
Tracked Stackers & Stockpilers ...	9
Recycling Equipment.....	9
Mauldin .....	10
Gradall .....	11

### TRAILERS

Globe Trailers .....	12
Hudson Bros. Trailers .....	12

### ATTACHMENTS & ACCESSORIES .....

13

### PARTS & SERVICE .....

15

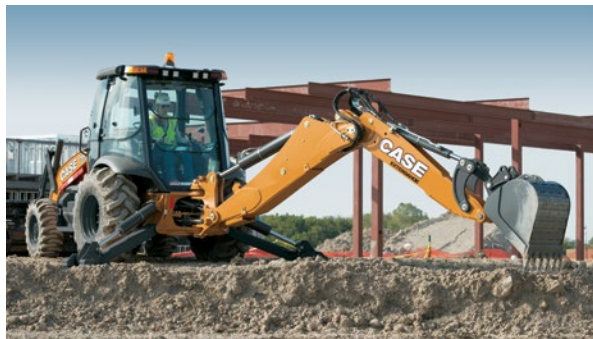
## HILLS MACHINERY

Founded by Adam and Jim Hills, Hills Machinery sells, rents and repairs equipment with a dedicated group of heavy equipment industry professionals to ensure quality performance, quality parts and quality customer service. Over the last several years, Hills Machinery has continued to evolve and consistently serve their customers with first-class treatment and offerings in the industry.

Today, Hills Machinery operates seven locations across the Carolinas that not only offer CASE equipment, but also Rubble Master, Terex Finlay, Gradall, Edge Innovate, Mauldin Paving Products, Globe Trailers, Interstate Trailers, Hudson Brothers Trailers, CASE Hammers, NPK Attachments, a wide variety of ground engaging tools and attachments and much more. The company continues to improve their service and do whatever it takes to satisfy their customers' equipment needs.





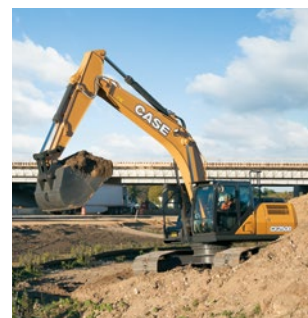


## BACKHOE LOADERS

Model	580N EP	580N	580SN	580SN WT	590SN
Net hp	74	90	97	97	110
Operating Wt - 4WD (lb)	15,810	17,751	19,067	20,077	20,532
Backhoe Bucket Breakout Force (lbf)	11,517	11,517	14,452	15,070	15,853

## HYDRAULIC EXCAVATORS

Model	CX130D	CX160D	CX210D	CX250D	CX300D	CX350D	CX490D	CX500D	CX750D
Net hp	102	112	160	177	207	268	362	362	512
Operating Wt (lb)	29,100	38,400	48,900	56,900	67,200	82,483	109,300	111,800	158,300
Max Dig Depth	18' 3"	19' 11"	21' 10"	22' 8"	23' 4"	24' 1"	24' 11"	21' 4"	28' 1"



## MIDI/MINI EXCAVATORS

Model	CX17C	CX26C	CX33C	CX37C	CX57C	CX60C	CX80C
Gross hp	16.8	24.8	24.4	24.4	66.9	64.7	53.6
Operating Wt (lb)	3,748	5,520	7,110	7,990	12,050	12,940	18,900
Max Dig Depth	7' 3"	7' 11"	9' 11"	10' 3"	12' 6"	11' 9"	13' 9"



## SHORT-RADIUS EXCAVATORS

Model	CX75C SR	CX145D SR	CX245D SR
Gross hp	54	102	160
Operating Wt (lb)	16,400	31,967	56,900
Max Dig Depth	13' 7"	18' 1"	20' 1"

## LANDSCAPE LOADER

Model	570N EP
Net hp	74
Operating Wt - 4WD (lb)	14,508
Loader Lift Capacity (lb)	6,503





## FULL-SIZE WHEEL LOADERS

Model	521G	621G	721G	821G	921G	1021G	1121G
Net Peak hp	131	162	179	211	242	296	320
Operating Wt (lb)	24,290	28,159	32,492	40,057	45,070	55,282	61,650
Bucket Capacity (yd³)	2.3	2.75	3.25	4.25	4.75	5.5	6.25

## COMPACT WHEEL LOADERS

Model	21F	121F	221F	321F
Net Peak hp	58	64	74	74
Operating Wt (lb)	11,272	11,618	12,547	13,303
Bucket Capacity (yd³)	0.92	1.05	1.2	1.3



## COMPACT TRACK LOADERS

Model	TR270	TR310	TR340	TV370	TV380
Gross hp	74	74	90	74	90
Operating Wt (lb)	8,270	8,880	10,000	9,630	10,550
Rated Operating Capacity (lb)	2,700	3,100	3,400	3,700	3,800

## SKID STEER LOADERS

Model	SR130	SR160	SR175	SV185	SR210	SR240	SR270	SV280	SV300	SV340
Gross hp	48.8	60	67	60	74	74	90	74	90	90
Operating Wt (lb)	5,180	5,645	6,270	6,570	6,970	7,400	8,117	8,090	8,655	9,100
Rated Operating Capacity (lb)	1,300	1,600	1,750	1,850	2,100	2,400	2,700	2,800	3,000	3,400





## CRAWLER DOZERS

Model	650M	750M	850M	1150M	1650M	2050M
Net hp	74	92	112	127.4	150	214
Operating Wt (lb)	16,405	20,040	21,980	31,134	37,756	45,414
Blade Width	109-120"	120"	124"	132"	156"	157.5"

Undercarriages available: WT, LT, LGP, Semi-u & PAT configurations

## ASPHALT COMPACTION

### Double Drum Rollers

Model	DV23	DV26	DV36	DV45	DV209C	DV209D	DV210C
Gross hp	32.5	32.5	41.6	41.6	100	100	100
Operating Wt (lb)	4,960	5,423	8,245	10,296	21,030	21,080	22,730
Drum Width	39.4"	47.2"	51.2"	54.3"	66"	66"	66"



### Combinations Rollers

Model	DV23CC	DV26CC	DV45CC	DV209CD
Gross hp	30.6	30.6	40.8	100
Operating Wt (lb)	4,740	4,916	9,535	20,750
Drum Width	39.4"	47.2"	54.3"	66"

### Pneumatic Rollers

Model	PT240
Gross hp	99
Operating Wt (lb)	20,525
Drum Width	78.1"

## SOIL COMPACTION

Model	SV208 Tier 3	SV208D Tier 4	SV210 Tier 3	SV212 Tier 3
Gross hp	99	74	99	148
Operating Wt (lb)	15,830	15,170	19,538	25,530
Drum Width	66"	67"	66"	84"







## ROUGH-TERRAIN FORKLIFTS

Model	586H	588H
Gross hp	74	74
Operating Wt (lb)	14,621	16,978
Lift Capacity (lb)	6,000	8,000

## MOTOR GRADERS

Model	865B	865B AWD	885B	885B AWD
Net hp	178/190/205	178/190/205	205/219	205/219
Operating Wt (lb)	33,796	35,273	39,771	41,248
Blade Width	13'	13'	14'	14'



## ASIP (AUTOMATED SERVICE INSPECTION PROGRAM)

We know how valuable uptime is in today's demanding construction environment and often whole crews of people and equipment depend on a machine to run and perform. ASIP is a service provided by Hills Machinery Company to help prevent down time by identifying routine repairs and service work to help get ahead of a failure that might leave you and your job at a standstill. We provide a free quick 20-101 point inspection every time our trained technicians touch your equipment. You are quickly notified of any additional items that may need to be addressed now to increase uptime, prevent a future service call and help increase your productivity. Prices are provided in advance for most repairs, so you know what to expect and can feel confident we are doing everything we can to keep your equipment repair costs low and your productivity levels high.



**Contact your local Hills Machinery Service department for complete details at 888.830.5939**



## IMPACT CRUSHERS

### Rubble Master Mobile Impact Crushers

Model	RM60GO!	RM 70GO!	RM 90GO!	RM 100GO!	RM 120GO!
<b>Tons Per Hour (tph)</b>	up to 90	up to 140	up to 200	up to 275	up to 350
<b>Machine Wt (lb)</b>	29,700	47,000	62,500	74,700	89,500



### Terex Impact Crushers

Model	I-100	I-110	I-120RS	I-140
<b>Tons Per Hour (tph)</b>	260	260	275	350
<b>Machine Wt (lb)</b>	59,525	73,854	106,153	107,410

## HEAVY-DUTY SCREENS

### Rubble Master Scalper Screens

Model	RM HS3500M	RM HS5000M	RM HS7500M	RM HS11000M
<b>Screenbox</b>	9' x 4'	12' x 5'	16' x 5'	20' x 6'
<b>Machine Wt (lb)</b>	37,500	54,000	77,200	94,800



### Terex Heavy Duty Screens

Model	893	883+	883+ Spaleck	873	873 Spaleck	863
<b>Tons Per Hour (tph)</b>	800	600	500	450	450	280
<b>Machine Wt (lb)</b>	106,000	68,340	67,240	57,982	56,879	40,345


**TEREX® | FINLAY**


## INCLINED SCREENS



### Rubble Master Inclined Screens

Model	RM MSC5700M	RM MSC8500M-2D	RM MSC8500M-3D	RM HS10500M-2D	RM HS10500M-3D
Machine Wt (lb)	59,100	67,200	76,500	74,970	78,300
# of Stockpilers	3	3	4	3	4
Screenbox	12' x 5'	18' x 5'	18' x 5'	22' x 5'	22' x 5'



### Terex Inclined Screens

Model	683	694+	694+ Dual Power	693+	693+ Spaleck	684 2-Deck	684 3-Deck	674 3-Deck
Machine Wt (lb)	53,462	86,531	88,184	73,855	73,855	63,380	53,462	62,832
# of Stockpilers	3	4	4	3	3	2	3	4
Tons Per Hour (tph)	275	600	600	550	550	500	500	500

## JAW CRUSHERS



### Terex Jaw Crushers

Model	J-1480	J-1175	J-1170	J-1170 AS	J-1160	J-960
Machine Wt (lb)	165,787	113,096	107,806	120,372	73,854	64,485
Tons Per Hour (tph)	750	475	400	400	350	175



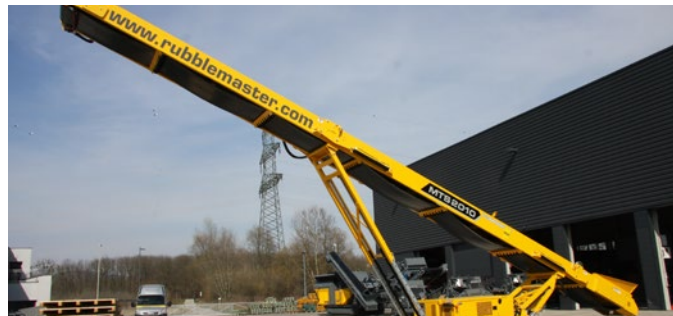
## TRACKED STACKERS & STOCKPILERS

### Edge Track Stackers



Model	TS50	TS65	TS80	TS100
Machine Wt (lb)	22,000	25,400	28,600	48,400
Conveyor Width	40" or 48"	40" or 48"	40" or 48"	48"
Working Width	7' 6"	7' 6"	7' 6"	9' 2"

### Rubble Master Tracked Stackers



Model	RM MTS2010M	RM MTS2212M
Machine Wt (lb)	28,660	23,110
Conveyor Width	40"	48"
Conveyor Length	65'	80'



### Edge Stockpilers

Model	MS30	MS40	MS50	MS65	MS80	MS100
Machine Wt (lb)	4,600	6,600	6,600	8,900	15,420	38,400
Conveyor Width	32"	32"	32"	32"	36"	36"
Working Width	11' 4"	11' 4"	11' 4"	11' 4"	12' 9"	22' 3"

## RECYCLING EQUIPMENT

### Edge Mobile Trommels



Model	TRM 516	TRM 622
Machine Wt (lb)	40,600	80,400
Working Width	7' 7"	9' 5"

### Edge Material Classifier



Model	MC1400
Machine Wt (lb)	35,200
Working Width	22' 6"

### Edge Slow Speed Waste Shredder



Model	Slayer - XL
Hopper Capacity (yd³)	4.6
Shredder Area	6' 5" x 6' 6"





## MAINTAINER

Model	M413	M413 XT
hp	118	118
Operating Wt (lb)	12,650	13,220
Moldboard	10'	10'



## ASPHALT PAVERS

Model	1750-C	1550-D	690-G	550-E
hp - Standard	85	67	38	23/28
Operating Wt (lb)	18,000	12,500	9,700	8,300



## TACK TANKS

Model	MT-300	MT-600
Tank (empty)	2,250	2,850
Capacity (Gal)	300	600



## ROLLERS

Model	1450	3000	4000	4700
Weight (empty)	1,875	2,170	3,170	3,500



## DISTRIBUTOR TRUCKS

Precision Spray Heated Asphalt Distributor & Water/Flusher Tanks available







## HIGHWAY WHEELED EXCAVATORS

Model	XL 3100 V	XL 4100 V	XL 5100 V
Gross hp	215	248	315
Operating Wt (lb)	40,930	49,684	57,670
Max Dig Depth	10'	15'	20'



## ROUGH TERRAIN WHEELED EXCAVATORS

Model	XL 3300 V	XL 4300 V	XL 5300 V
Gross hp	172	173	173
Operating Wt (lb)	39,294	43,580	51,216
Rated Bucket Breakout Force (lb)	19,300	25,405	25,405



## CRAWLER EXCAVATORS

Model	XL 3200V	XL 4200V	XL 5300V
Gross hp	172	173	173
Operating Wt (lb)	39,240	46,862	54,452
Rated Bucket Breakout Force (lb)	19,300	25,405	25,405



## CROSSOVER MODELS

Model	D152	D154
Gross hp	220	250
Operating Wt (lb)	32,200	34,500
Rated Bucket Breakout Force (lb)	11,400	11,400

# GRADALL

## GLOBE TRAILERS



### TAG-A-LONG

20 Ton  
Model #20TA141203



### SLIDING AXLE

50 Ton  
Model #50SA140426



### DUMP

30 Ton, 60 Yard  
Model #60DD140607



### LOWBOY

55 Ton  
Model #55LB141202



### LOWBOY

55 Ton  
Model # 55LB140502



### LOWBOY

55 Ton, Flip Axle, Flip Box  
Model #55FA150801

## HUDSON BROS. TRAILERS



- Fender Equipment
- Landscape
- Deckover
- Gooseneck
- Tilt
- Airbrake
- Auto Transport





Hills Machinery offers a variety of attachments and accessories to meet all your needs. Expand the versatility and increase the performance of the machines in your fleet with our selection of buckets, rakes, augers, and more from the quality brands you trust.

## PALADIN

Manufacturer of attachment tools from small tool carriers to large excavators, wheel loaders, tractors, and truck chassis

- Coupler Systems
- Augers
- Sweepers
- And more!



## CID X-TREME ATTACHMENTS

Full line of skid steer and tractor attachments

- Buckets
- Grapples
- Rakes
- Trenchers
- Specialty Attachments



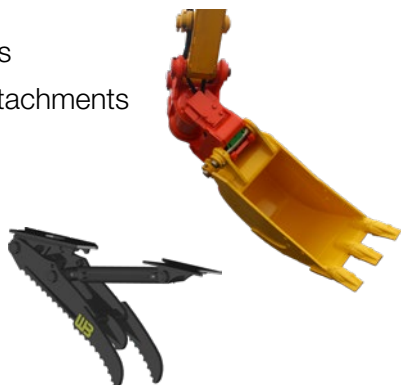
## WERK-BRAU

Complete lines of heavy equipment attachments for full size and mini excavators, wheel loaders, and backhoes

Rotary Actuators

Construction Attachments

- PowerTilt
- PowerGrip
- Buckets
- Couplers
- Thumbs
- And more!



## BLUE DIAMOND

Skid Steer Attachments

- Grapples
- Brooms
- Brush Cutters
- Rakes
- Forks
- And more!



## HENKE

Superior attachments for any snow management scenario

- Graders & Loader Attachments
- Spreaders
- Truck Attachments



## FAE ADVANCED SHREDDING TECHNOLOGIES

- Mulchers
- Cutters
- Tillers
- Crushers



## MACHINE CONTROL SOLUTIONS AVAILABLE:

Equip your Excavators, Dozers, Motor Graders, Wheel Loaders, and SSL/CTLs today!



CASE Construction has partnered with Leica Geosystems to provide machine control solutions that help you deliver faster, high-quality work, job after job for almost any earth-moving application. Perfect your workflow with tailor-made iCON technology for all positioning and measuring tasks. The intelligent, easy-to-use product line and software package enables enhanced performance and profitability by eliminating rework and making repeatable precision a reality.



## LEICA GEOSYSTEMS - INTELLIGENT CONSTRUCTION

Fully customizable solutions and cutting-edge technology within the iCON portfolio are adaptable to your specific needs and applications.

### iCONstruct

- Customizable hardware and software for positioning and measuring tasks in road and general construction applications. This straightforward, extendable and interchangeable solution offers seamless integration with one user interface.

### iCONtrol

- Perfect workflow starts with perfect communication. iCONtrol provides reliable and seamless sensor communication between construction personnel on site and the full range of iCON machine control solutions.

### iCONnect

- Connect your site and access your database from anywhere with the iCON telematics web-based suite of tools. View, sync and track every step of your workflow system to reduce machine downtime and monitor your machine fleet in real-time.

### iCONsult

- Clear guidance on intelligent construction through an extensive support network ensures the maximum benefit from your investment. Personal service and professional consultancy are at your fingertips while you work.

## GRADER SYSTEMS



Automatic elevation and slope control with our 2D and 3D systems increase precision and save material costs.

## DOZER SYSTEMS



Complete 2D and 3D solutions for large earth moving projects allow you to maximize your machine utilization and return on investment.

- when it has to be right

**Leica**  
Geosystems



## PARTS

Hills Machinery carries and supplies parts for most major brands in the construction industry ensuring you get the help you need when it matters most. Our experienced parts managers can help you find exactly what you need for new or remanufacturing projects. We maintain a multi-million dollar parts inventory to help deliver your parts as quickly as possible.

- Online parts ordering available
- 24/7 emergency parts support – Call your nearest location today

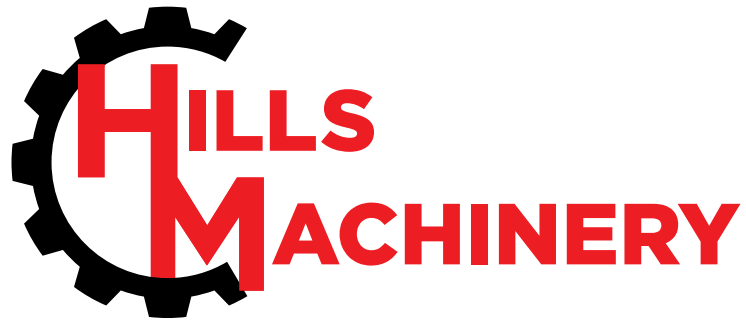


## SERVICE

Hills Machinery is dedicated to maximizing your uptime with on-site service 24 hours a day, 7 days a week. Our factory-trained, certified technicians undergo extensive training to assure their equipment knowledge is cutting edge, so your equipment is serviced correctly the first time. Whether we are working at your job site or in our facilities, our technicians are equipped to provide first-class maintenance and repair services. You are depending on your equipment to keep your business running, and so are we.

- 24 hour emergency field service
- Extended warranties available





## **NORTH CAROLINA**

### **Charlotte**

11717 Reames Rd  
Charlotte, NC 28269  
Ph **704.208.5564**

### **Greensboro**

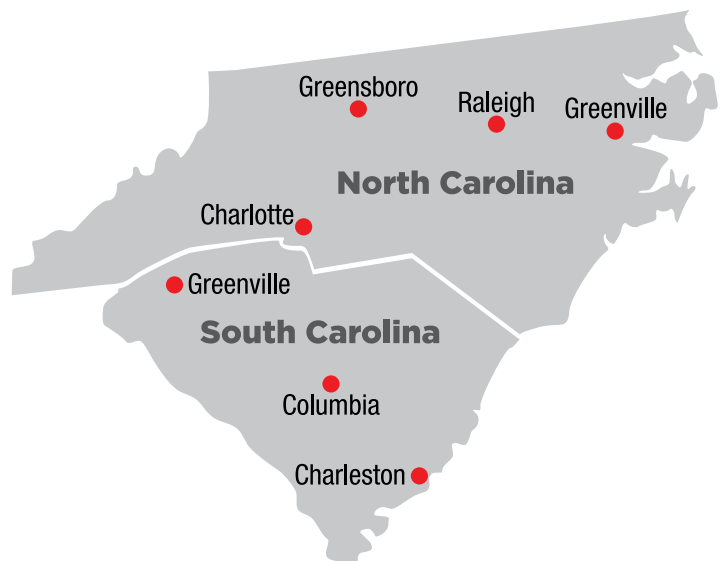
2901 Manufacturers Rd  
Greensboro, NC 27406  
Ph **336.308.3045**

### **Greenville**

415 Belvoir Hwy  
Greenville, NC 27834  
Ph **252.752.7145**

### **Raleigh**

1501 Hedingham Blvd  
Raleigh, NC 27604  
Ph **919.746.7938**



## **SOUTH CAROLINA**

### **Columbia**

1014 Atlas Way  
Columbia, SC 29209  
Ph **803.658.0200**

### **Charleston**

7168B Cross County Rd  
N Charleston, SC 29418  
Ph **843.225.9377**

### **Greenville**

11 Dixie Circle  
Greenville, SC 29605  
Ph **864.546.5208**

**PERFORMANCE YOU CAN COUNT ON**

EQUIPMENT • PARTS • SERVICE • RENTALS

[WWW.HILLSMACHINERY.COM](http://WWW.HILLSMACHINERY.COM)

888.830.5939